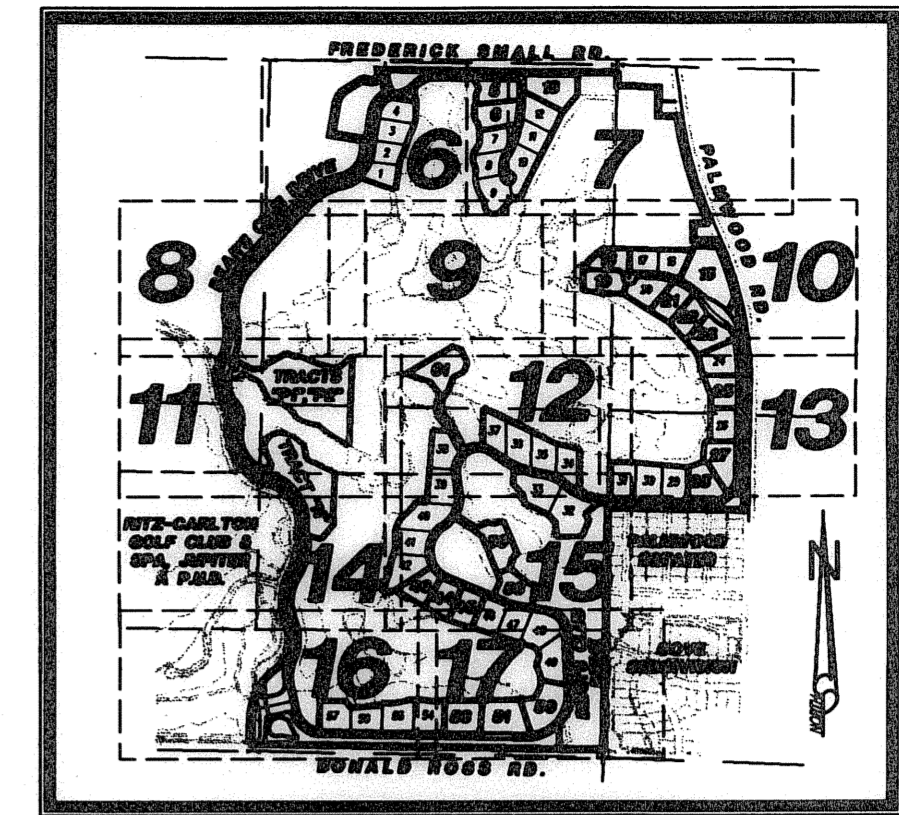


BEAR'S CLUB REPLAT, A P.U.D.

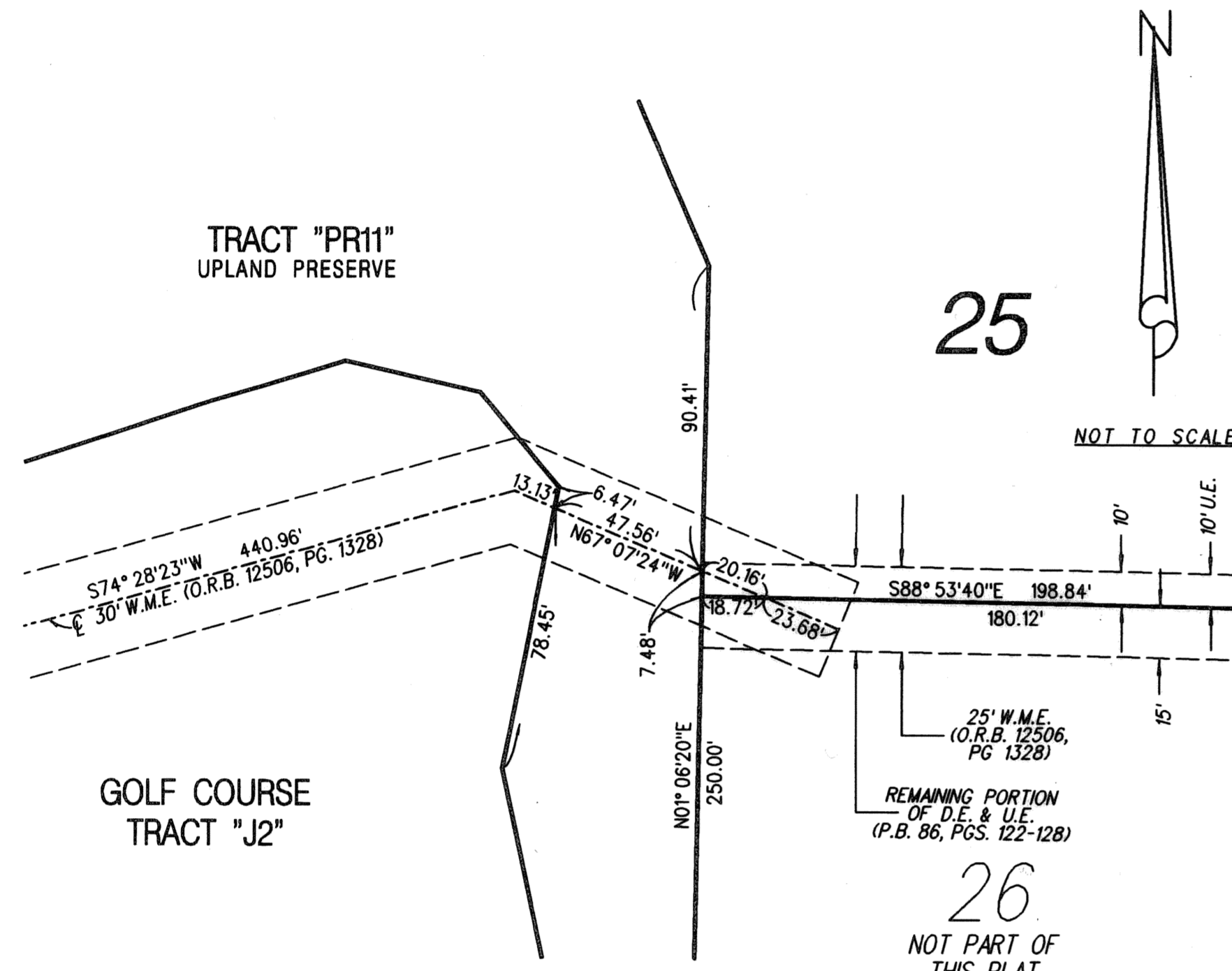
BEING A REPLAT OF A PORTION OF BEAR'S CLUB, A P.U.D.,
AS RECORDED IN PLAT BOOK 86, PAGES 122 THROUGH 128,
AND A PARCEL OF LAND DESCRIBED IN OFFICIAL RECORD BOOK 11237 PAGE 75,
ALL IN THE PUBLIC RECORDS OF PALM BEACH COUNTY FLORIDA,
LYING IN SECTIONS 19 & 20, TOWNSHIP 41 SOUTH, RANGE 43 EAST
TOWN OF JUPITER, PALM BEACH COUNTY, FLORIDA

SHEET 19 OF 21 JULY 2005

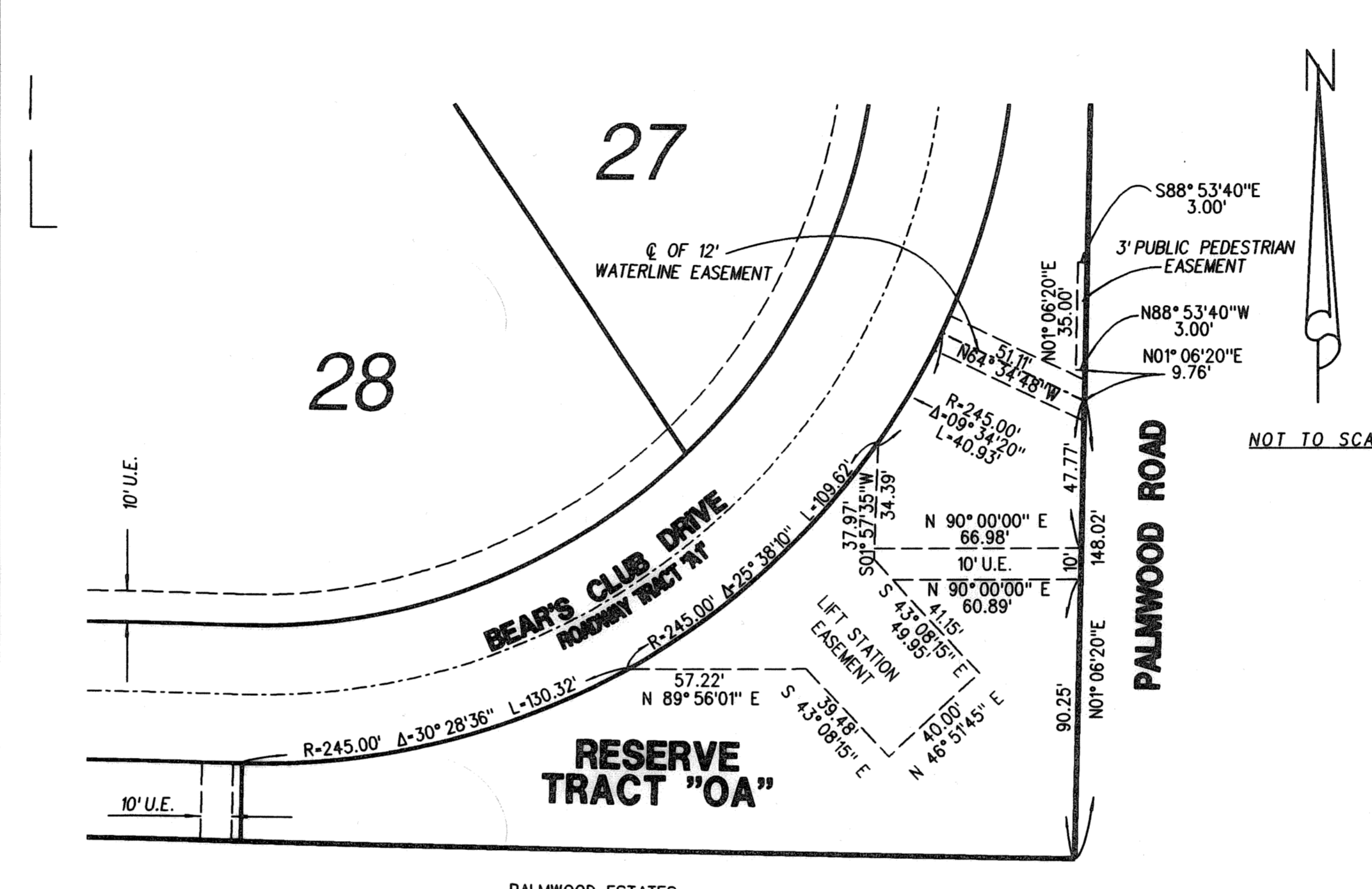


KEY SHEET

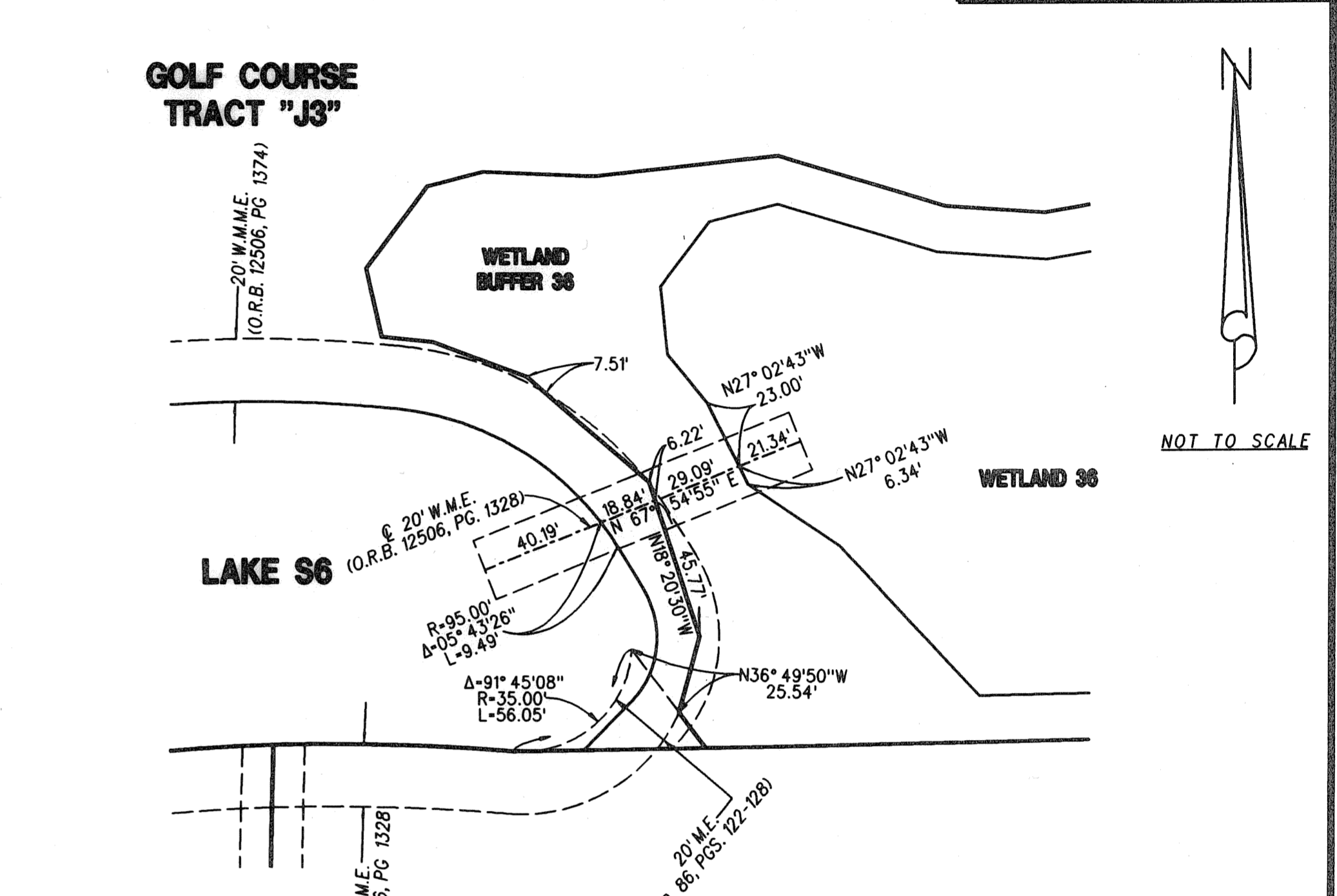
51



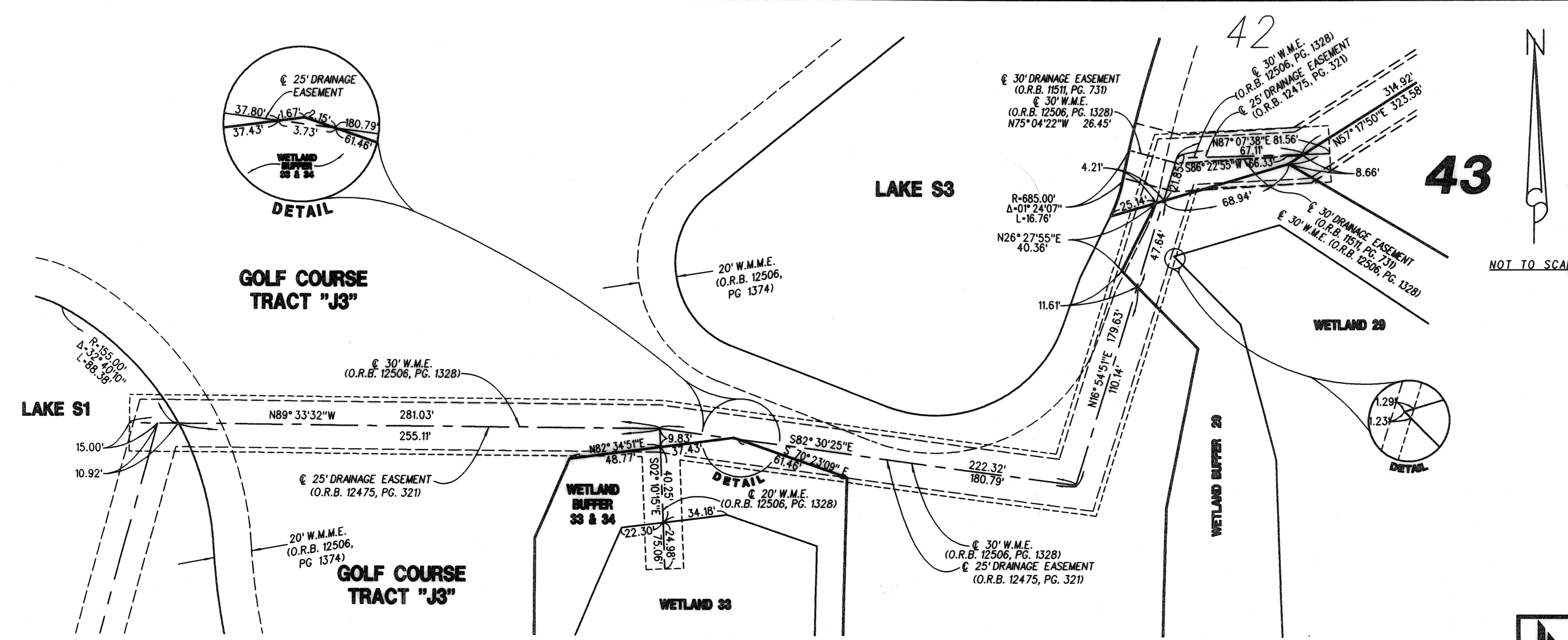
DETAIL "G" (SEE SHEET 13)



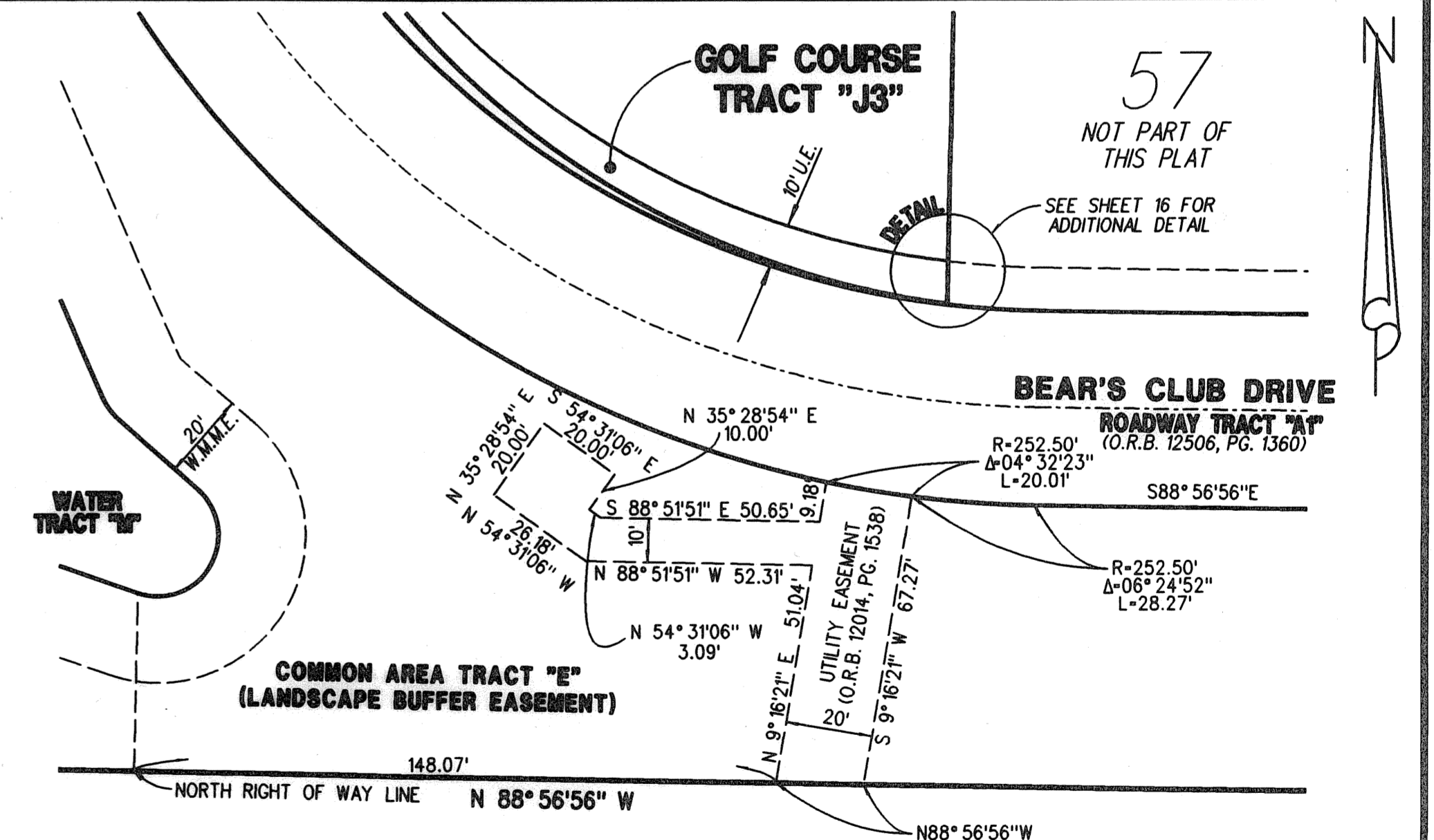
DETAIL "H" (SEE SHEET 13)



DETAIL "I" (SEE SHEET 17)



DETAIL "J" (SEE SHEET 14 & 15)



DETAIL "K" (SEE SHEET 16)

LIDBERG LAND SURVEYING, INC.
675 West Indiantown Road, Suite 200,
Jupiter, Florida 33458 TEL. 561-746-8454

CAD. K:\UST\194143\BEARCLUB\2090306\ SHEET19.DGN			
REF. K:\UST\194143\BEARCLUB\2090306\2090306.DGN			
FLD. B.D.	FB. PG.	JOB 00-209-306	
OFF. R.W. & E.C.	DATE		JUNE 2005
CKD. D.C.L.	SHEET 19 OF 21	DWG.	D00-209P